

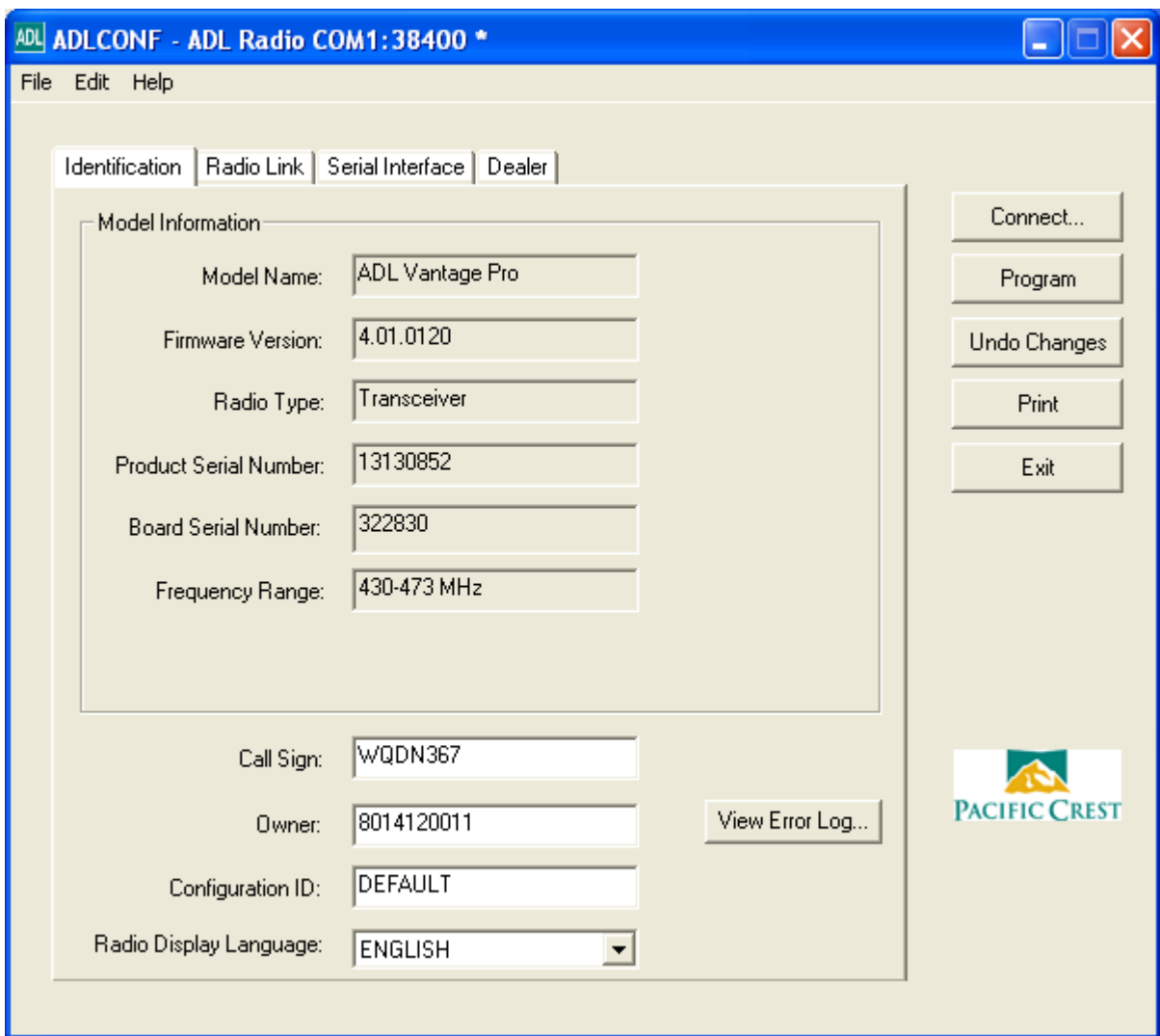
ADL Vantage Pro Configuration For SATEL Mode

Date: 5 January 2018

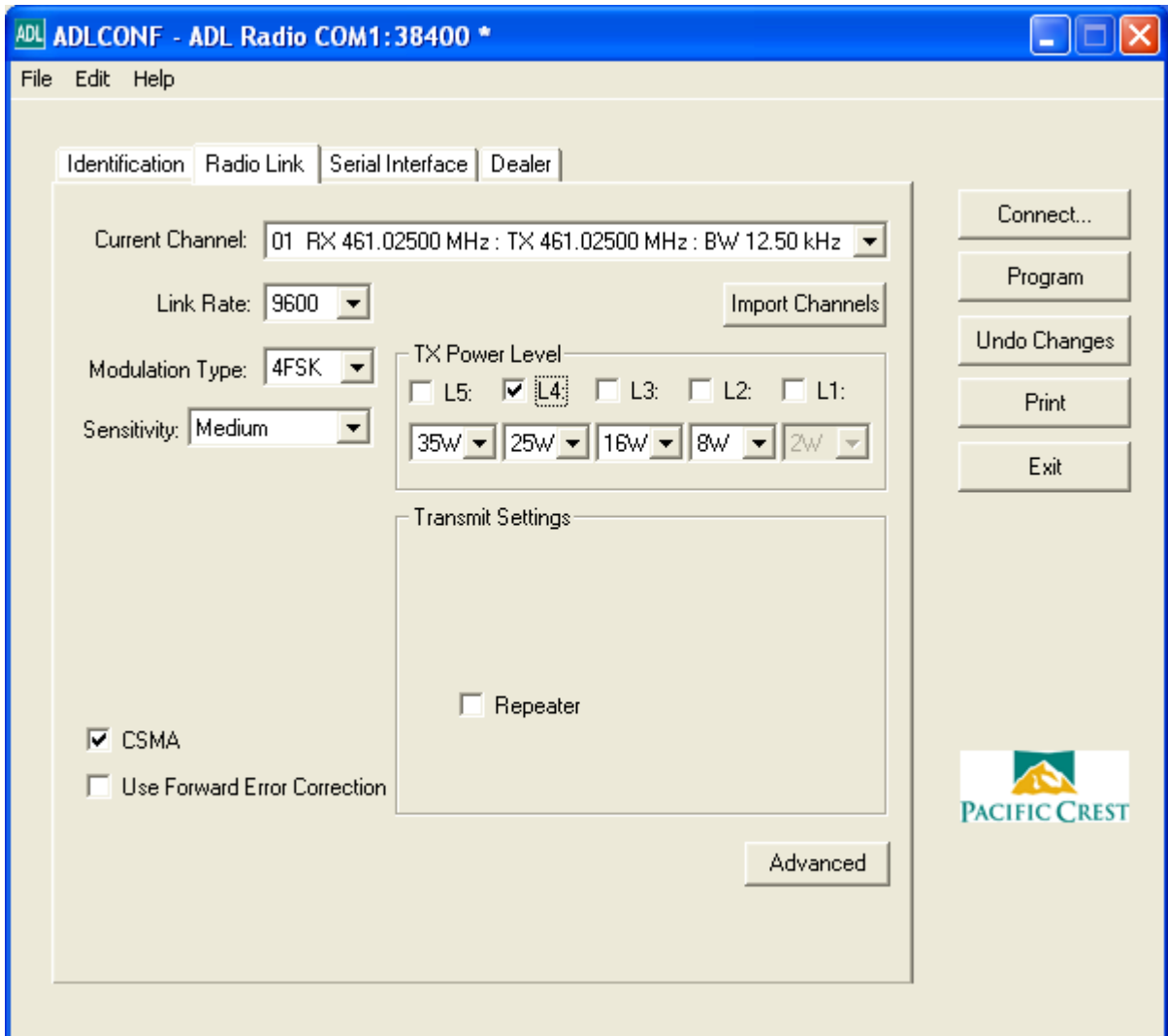
By: Mark Silver, ms@igage.com, +1-801-412-0011 x16

Introduction

These are the settings that I use for use with iG8 UHF Rovers.



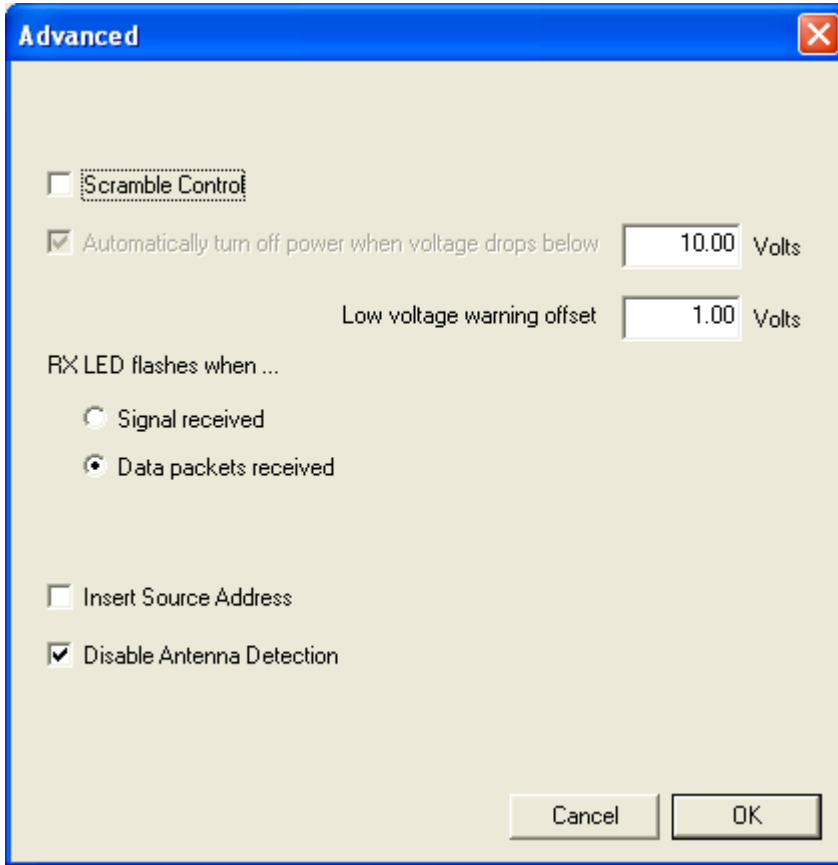
We set the owners phone number as the Owner name, there is not enough characters to do much else.



Set sensitivity to Medium for repeater and Low for a base.

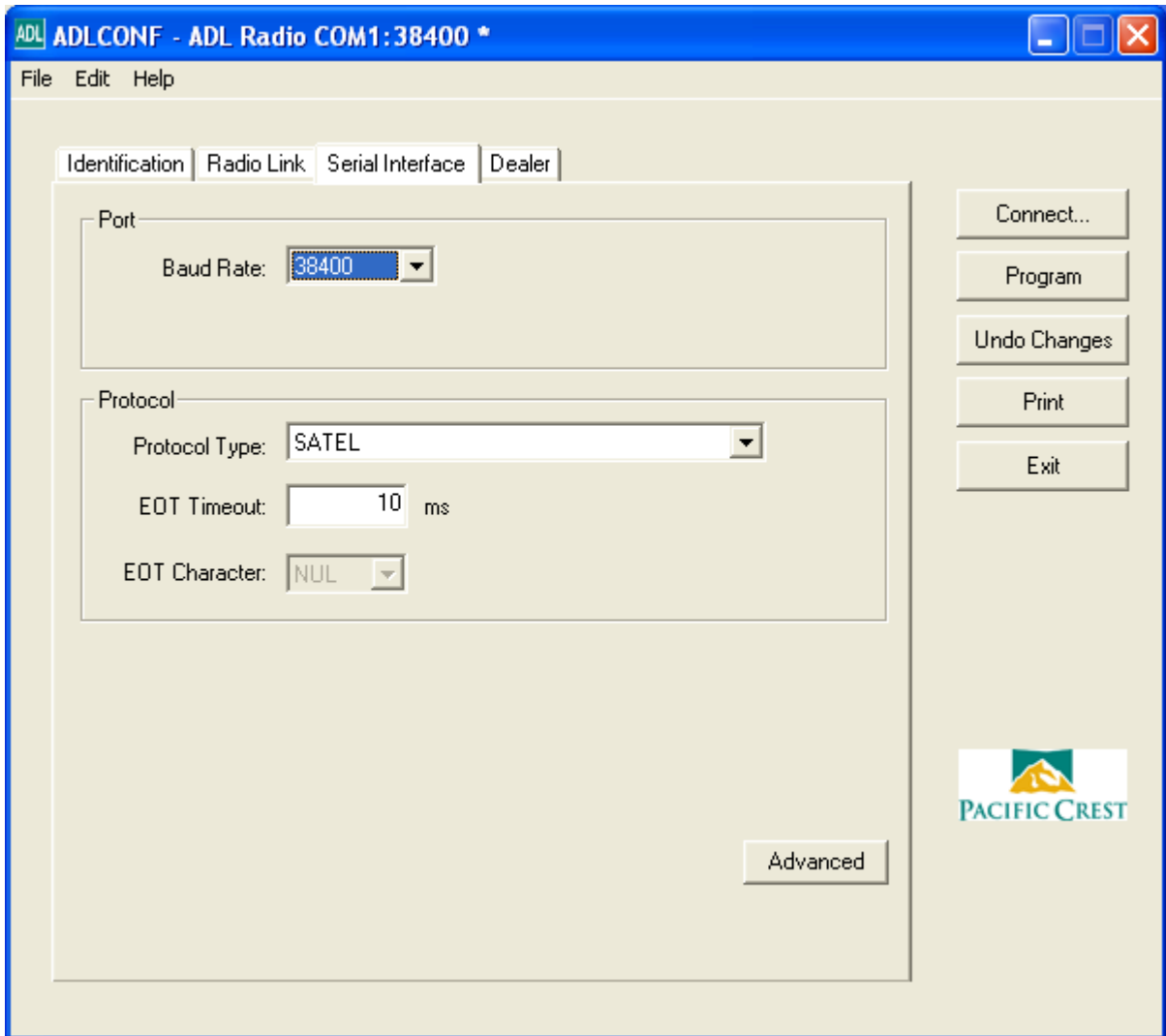
Be sure to set the Modulation Type to 4FSK! << This is important!!!

If you push the 'Advanced' button:



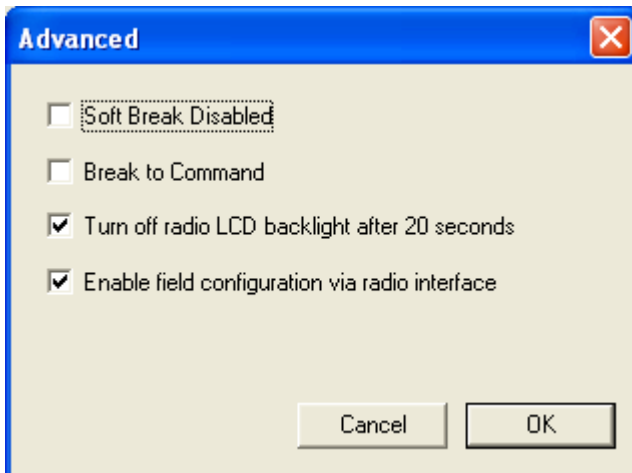
Uncheck Scramble Control. Typically we uncheck 'Disable Antenna Detection'.

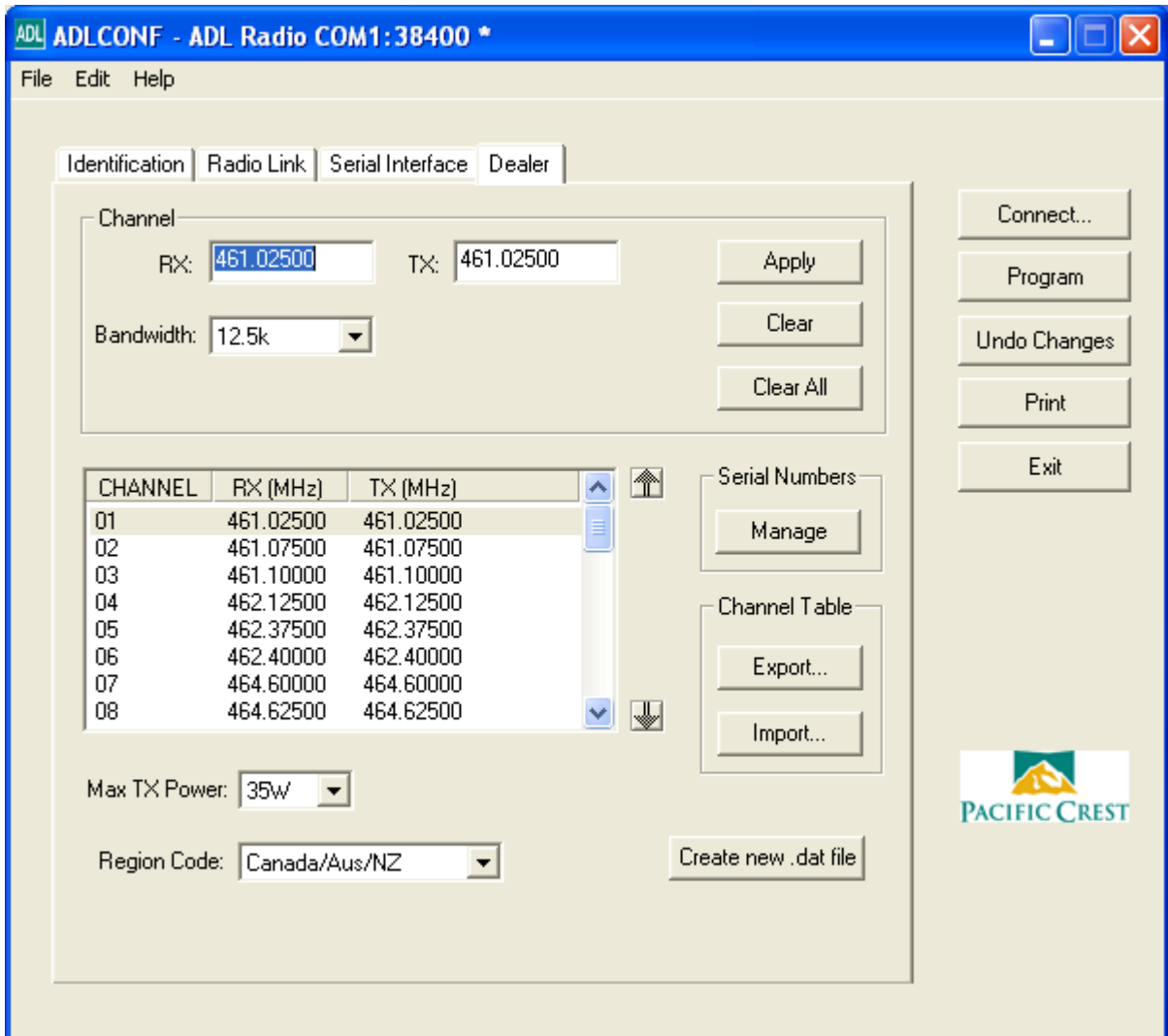
The RXLED setting can be used to check for other users on the same frequency, or to light when valid packets are received.



The baud rate above is the baud rate of the serial cable.

Clicking 'Advanced':





DO NOT, UNDER ANYCIRCUMSTANCES, EVER (EVEN FOR A MOMENT) CHANGE THE REGION CODE.

Do not, change the region code.

Do NOT, change the region code.

Hopefully this is clear.